

106 Hutton Road, Shenfield, Essex, CM15 8NB

Tel: 01277 218485

Email: enquiries@meacockjones.co.uk

Web: www.meacockandjones.co.uk

MEACOCK & JONES



Flat 7 Dounsell Court Ongar Road Pilgrims Hatch

Price £235,000

Set approximately one and half miles to Brentwood high street, this bright and airy one bedroom ground floor flat is offered for sale with no onward chain and its own private access.

The accommodation commences with a spacious hallway giving access to all the rooms, and with the added convenience of two large storage cupboards, plus attractive engineered wood flooring flowing through into the kitchen and lounge. The modern kitchen is a good sized space with country style white wooden units at low and eye level, space for all appliances and plenty of contrasting work tops for your meal preparations. The flat has the benefit of a separate wc, with the bathroom being of modern design with tiled walls and floor, and a white suite. The good sized bedroom has views over the communal gardens and plenty of room for bedroom furniture. To complete the accommodation the lounge is dual aspect, making it a lovely bright space with plenty of room for your sofas and armchairs. There is plenty of storage space available inside and out.

The property is nicely presented throughout and is surrounded by well kept communal gardens, with ample parking nearby and a garage to rent should you require to do so. Set overlooking Larchwood Playing Fields and within easy reach of Brentwood Centre and Weald Country Park there are many options for indoor and outdoor leisure activities. The area is also known for its excellent schooling, and there are a good selection of local shops nearby.



Accommodation comprises:

Entrance Hallway

Cloakroom

5'7 x 3'8 (1.70m x 1.12m)

Lounge

16'7 x 10'1 (5.05m x 3.07m)

Kitchen

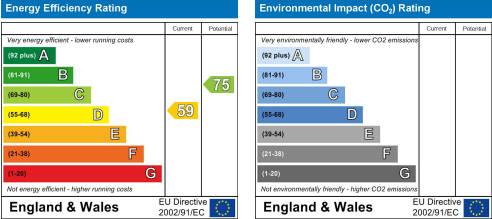
13'8 x 8' (4.17m x 2.44m)

Bedroom

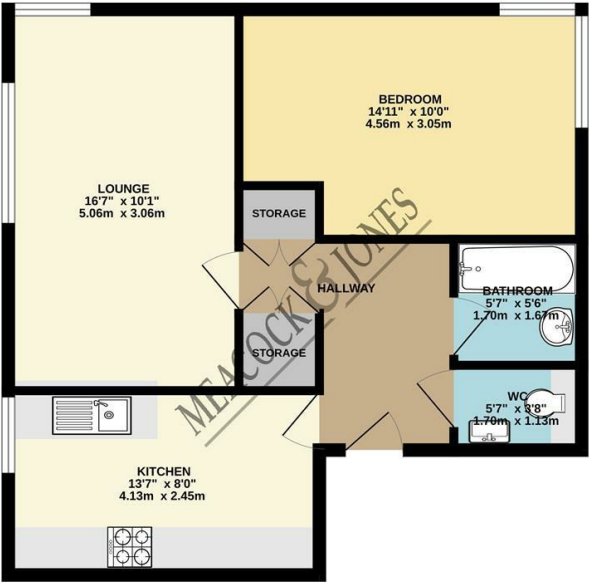
14'11 x 10' (4.55m x 3.05m)

Bathroom

5'7 x 5'6 (1.70m x 1.68m)



GROUND FLOOR
554 sq.ft. (51.4 sq.m.) approx.



TOTAL FLOOR AREA: 554 sq.ft. (51.4 sq.m.) approx.
Whilst every attempt has been made to ensure the accuracy of the floorplan contained herein, measurements of doors, windows, rooms and any other items are approximate and no responsibility is taken for any errors, omissions or mis-statements. This plan is for illustrative purposes only and should be used as such by any prospective purchaser. The services, systems and appliances shown have not been tested and no guarantee as to their operability or efficiency can be given.
Made with floorplan.co.uk

